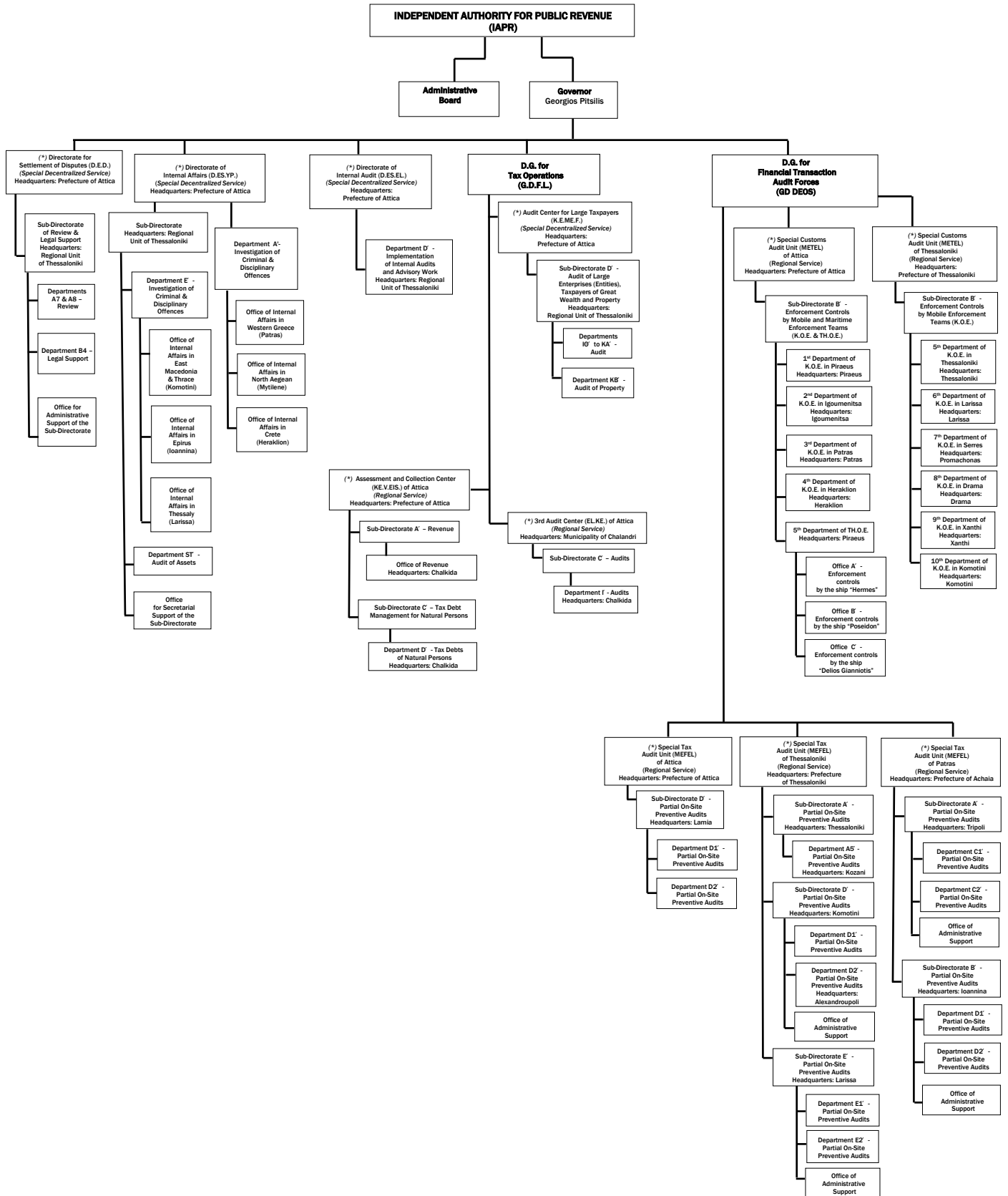
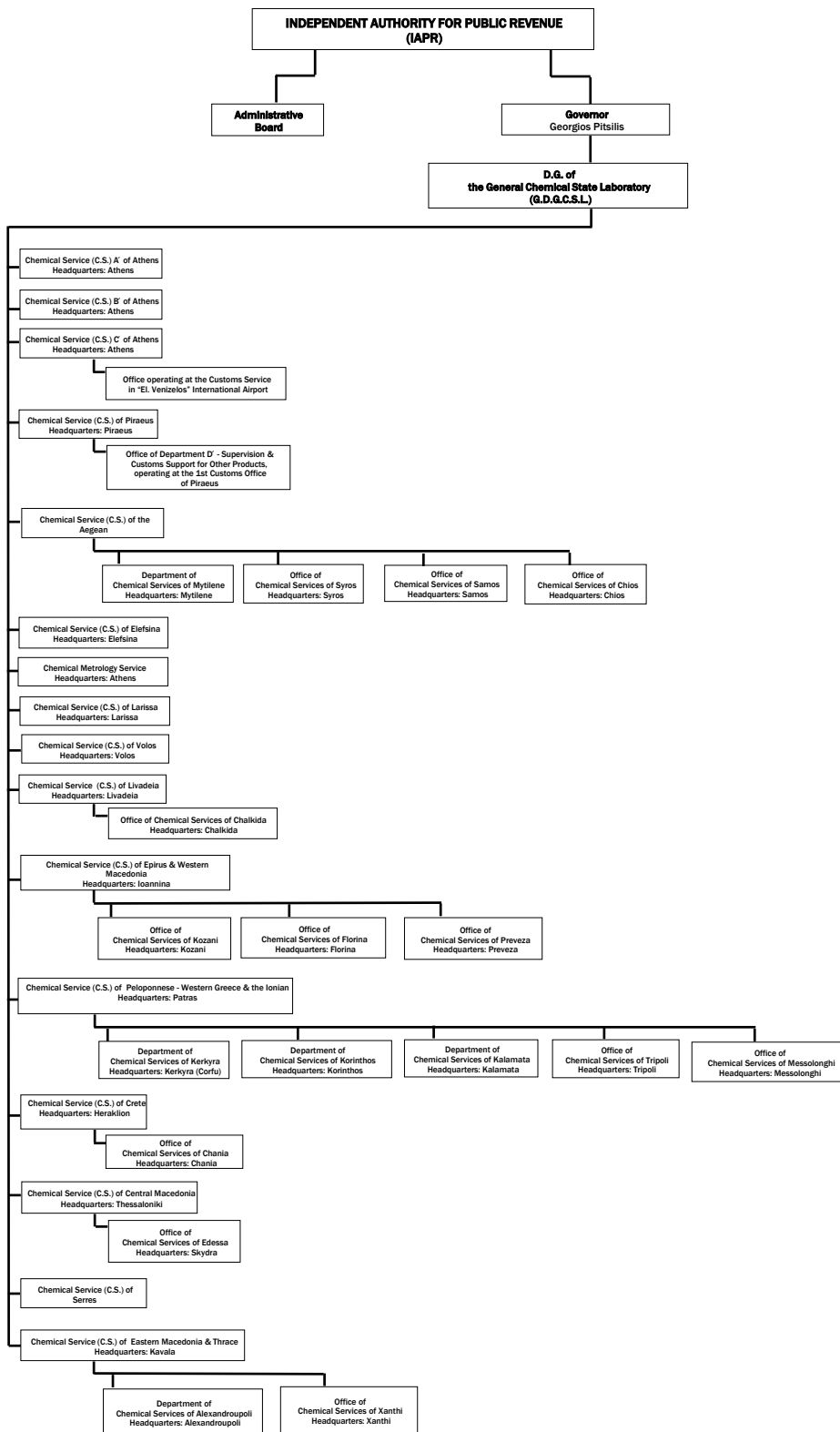


(*) See 2nd page
 (**) Supervised and coordinated by the Directorate for Financial Crime Audit Planning (D.I.P.E.O.E.)
 (***) Supervised and coordinated by the Directorate for Planning and Evaluation of Tax Audits and Investigations (D.I.P.A.F.E.E.)
 (****) Supervised and coordinated by the Directorate for Planning and Evaluation of Customs Audits and Investigations (D.I.P.A.T.E.E.)
 (*****) For issues regarding management of customs offences, preventive and ex-post controls and prosecution of the A'-B' and B' Class Customs Offices, which depend on them
 (*****) They are subordinate to Customs Offices of A', A'-B' and B' Class and operate outside their headquarters
 (*****) See 3rd page
 (*****) See 4th page

SERVICES UNITS OPERATING OUTSIDE THEIR HEADQUARTERS



(***) REGIONAL CHEMICAL SERVICES (C.S.)**



OFFICES OPERATING IN IAPR

- Special Legal Office for Public Revenue (E.N.G.D.E.):
 - a) Department A' - Tax & Customs Affairs and
 - b) Department B' - Administrative Enforcement & Other Affairs
- Offices of Employees Service Councils (A', B', C)
- Office of the Supreme Chemical Council (A.X.S.)
- Office of Supreme Committee for Customs Disputes (A.E.T.A.)

ENTITY SUPERVISED BY THE IAPR

- (WITHIN THE PUBLIC SECTOR)**
- Legal Entities of Public Law:**
- Special Fund for the Production and Quality Control of Alcohol and Alcoholic Beverages (E.T.E.P.P.A.A.)

(***) REGIONAL SERVICES OF THE D.G. FOR CONTROLS, AID AND PAYMENTS (GDELEP)**

